

# SYMCAD III

## AUTOMATED BODY MEASUREMENT



- Made-to-Measure clothing
- Automatic recommendation of garment sizes
- Fitness
- Medical

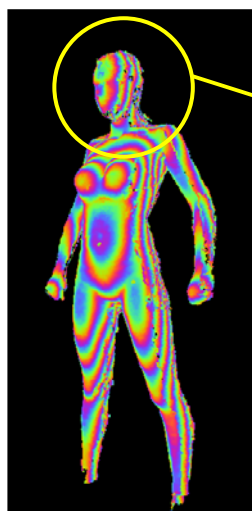


**MORE THAN 1.000.000 PEOPLE  
MEASURED AND DRESSED BY SYMCAD™**

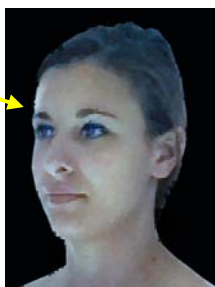
- ❖ **Very quick 3-D acquisition time** : from 1 to 1.8 sec. depending on the configuration.
- ❖ **Easy-to-use, autonomous and playful**, SYMCAD III comprehends voice assistance that supports the person from its entrance into the booth.
- ❖ **Subject positioning control** through a pictogram (body outline only)
- ❖ **Not sensitive to underwear color** and skin pigmentation
- ❖ **Subject measured in ambient light**
- ❖ **3-D acquisition at 360°**, considering the position of the sensors
- ❖ **Several measuring sequences with subject in different postures**
- ❖ **Automatic extraction** of more than 140 measures within less than 30 sec.
- ❖ **Body shape analysis** and **automatic posture classification**
- ❖ Accuracy within  $\pm 0.15\%$  on a 1.60-m cylinder, i.e.  $< \pm 2.4$  mm
- ❖ **Detection of static markers** (ex. stickers) set on the human body
- ❖ **Estimation of the distribution of garment sizes** according to the morphology of the wearers
- ❖ **Automatic calibration** within 2 minutes
- ❖ **Floor space**: lesser than 3.3 m<sup>2</sup>

**SYMCAD IS A PATENTED SYSTEM**

## APPLICATIONS



Colored level curves



Realistic display  
of the 3D  
reconstruction

Automated measurement is executed from raw scanned data.

3-D acquisitions and reconstructions are available in colors. Several types of data display are available with measurement lines shown on superimposed layers.

- ❖ Realistic 3D display
- ❖ 3D display without possible identification of the measured subject (colored level curves, point cloud, set of measured perimeters and curves).
- ❖ 2D display as front and side pictograms

More than 140 measures are automatically extracted, based on the identification of anatomical landmarks and according to the standards.



Monochromatic

**SYMCAD III – C (Cabin)** is particularly adapted to body measurement in retail shops and may be equipped with an extension allowing the subject to undress.

SYMCAD III – C also perfectly fulfills the needs of suppliers of professional clothes or uniforms with a potential throughput of 40 to 50 people per hour.

**SYMCAD III – T (Transportable)** is adapted to a mobile use with a setting-up time of less than an hour and a weight of less than 80 kg.

These configurations may be installed and commissioned by the client itself, because the product does not require any specific skill from the user.

## CONFIGURATIONS



Static booth



Mobile booth



Transportable booth



## REFERENCES



**FRANCE, BELGIUM, LUXEMBOURG,  
GERMANY, FINLAND,  
SPAIN, ITALY,  
GREECE, TURKEY**

**ALGERIA, SOUTH AFRICA,  
CHINA, SOUTH KOREA,  
RUSSIA, INDIA**



JUNE 2015



All specifications are subject to change without notice. Information provided by TELMAT Industrie is believed to be reliable.  
However, no liability is assumed for possible inaccuracies or omissions.  
All names, trademarks or products are trademarks or registered trademarks of their respective owners.

TELMAT Industrie - 6 rue de l'Industrie - B.P. 130 - SOULTZ - 68503 GUEBWILLER (France)  
Tel. (+33) 3.89.62.13.30 - Fax : (+33) 3.89.62.13.31  
Web site: [www.telmat.com](http://www.telmat.com)