

## Know your machine better



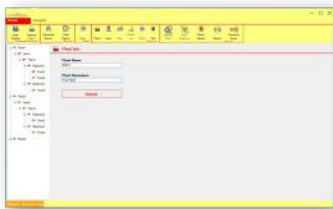
## Overview

**FactoryManager™** is essentially a **Vibration Data Management and Analysis Software**. It stands **UNIQUE** in many ways and excels through the versatility of application and data management. It is designed to be a utility reducing planned and unplanned stoppages in any plant.

**FactoryManager™** therefore represents a utility that has plant-wide applications. It is an ever-expanding application aimed at improving UPTIME and increasing productivity. Factory Operations are dependent on the control of machine vibrations. This is achieved through identification, detection, measurement, and assessment. Simple Gateway and Sensors.



## Unique Attributes

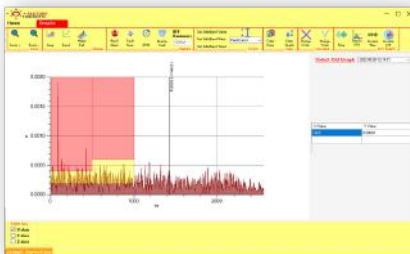


**Hierarchy**

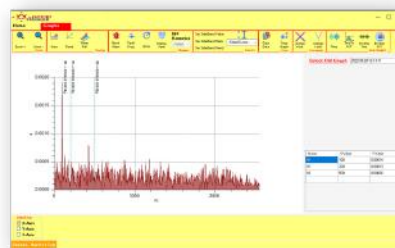
**FactoryManager™** has a unique characteristic of providing multiplicity. It has **five levels of hierarchy** and this hierarchy can be automatically created from the existing database. It can be singular as well as multiple in its hue. It can be a single license or networking license software. It can operate from anywhere and everywhere and it can be used forever without up gradation. However, it is also user to add upgrades at will. It has highly user-friendly Window like intuitive operation and navigation. It is equally simple to learn and provides conveniences for its user beyond expectation. With all this, high-resolution display of 1152×864 pixels, and extensive route management capabilities, **FactoryManager™** is an inexpensive utility. **FactoryManager™** meets the need of efficient vibration data management and intelligent analytical formatting. It has simple and intuitive data display and structuring facility that make it highly user friendly.

## Facilities

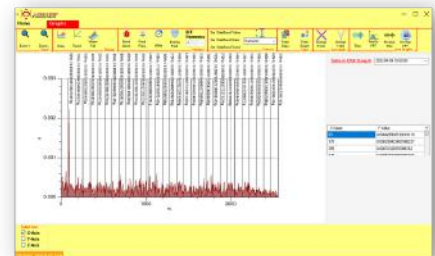
**FactoryManager™** lays emphasis on speed instead of memory use and has a simpler installation procedure. It provides Easy download of data. In line with its core characteristic of multiplicity, it provides multiple manipulative options for every feature and function. This helps in facilitating intelligent formatting for the identification of patterns and indications in the data. For any errors, it creates Error Logs for correction as appropriate. This in turn becomes a great training and learning tool. Above all **FactoryManager™** is open for Customization for OEMs. It has an endless list of Facilities that can be only appreciated through personal experience. Several dozens of reports are available in FactoryManager in formats of Word, Excel, PDF, MHT, RTF.



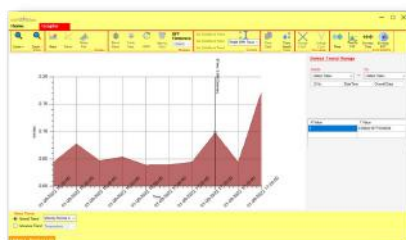
**Dashboard**



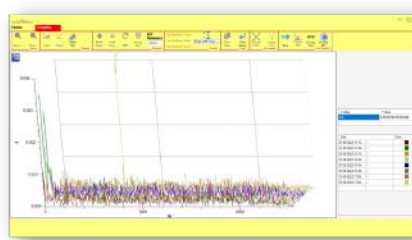
**Fault frequency**



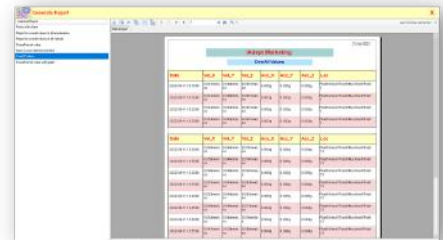
**Harmonics**



**Trend**



**Waterfall graph**



**Report**

## Analytics

**FactoryManager™** incorporates a large array of analytical functions, managing, data/graph/zoom/area display/ alarm/ cursor management and single dimensional analysis. The principles of multiplicity, flexibility & customization are applicable to all these. For example, Harmonic cursor can be generated for different triggers and the display for each Harmonic can be customized. The defaults in all functionalities help the new user but experienced users can set customized functionalities.

### Minimum PC Requirements

- **Operating System :** Windows 7, 8 & 10
- **Processor:** Intel i5 ( 1GHz), 4 GB RAM
- **Network:** Ethernet
- **Screen Resolution:** 1152× 864
- **Disk space:** 2GB+

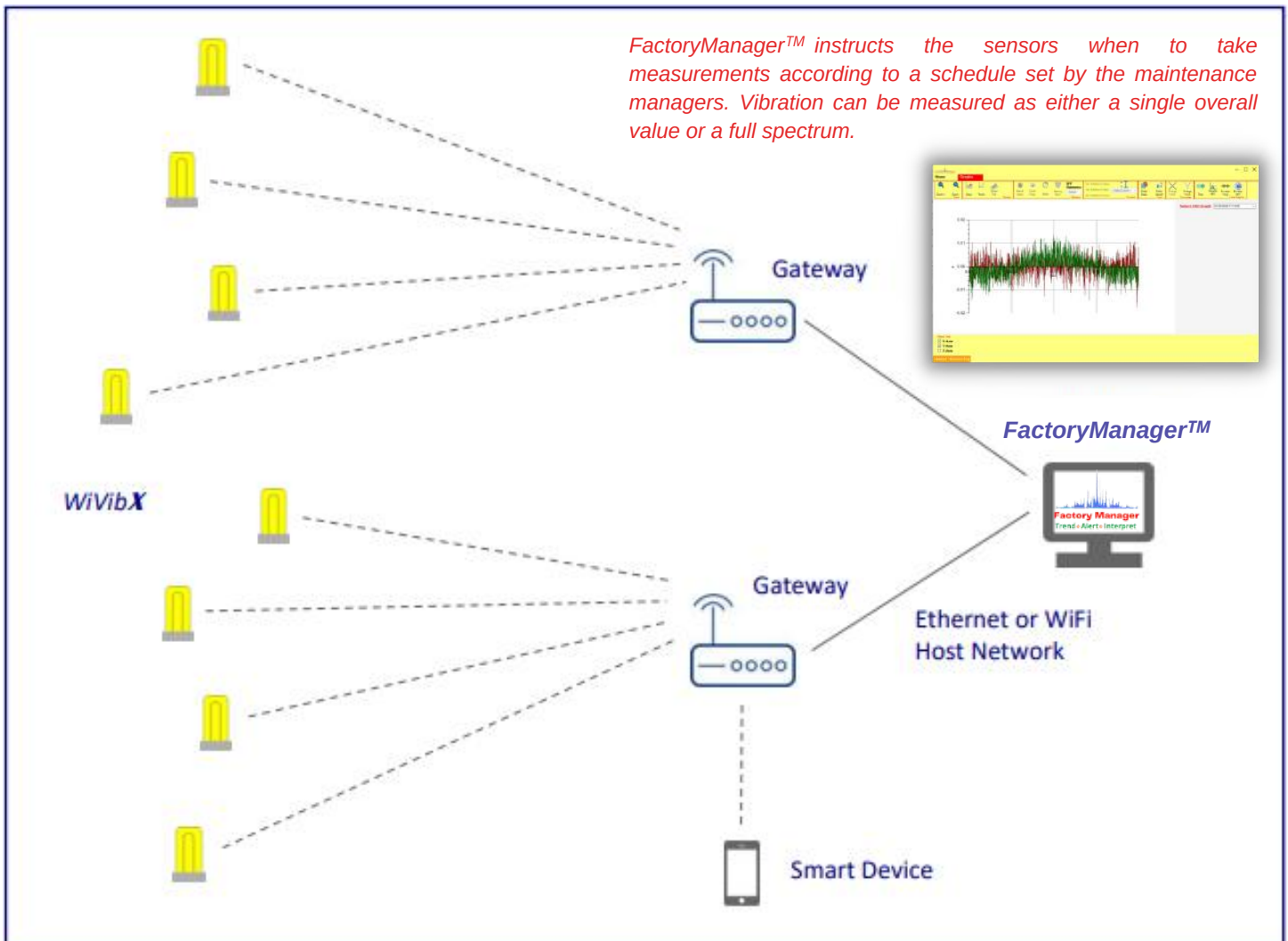
## Wireless and Ethernet Condition Monitoring Solutions on Standard LAN and WLAN Networks

### WiVib X TRI-AXIAL MULTI-FUNCTION SENSOR

**FactoryManager™** interrogates each gateway and selects, based on signal quality and the number of sensors visible to a gateway, which one will control each sensor. The gateway then makes links as required for overall configuration and trace sampling. Each gateway, therefore, handles the sensors that are associated with it. If a gateway loses power or goes down, the host can allocate sensors to an adjacent gateway.



*FactoryManager™ instructs the sensors when to take measurements according to a schedule set by the maintenance managers. Vibration can be measured as either a single overall value or a full spectrum.*



## MEASUREMENT SCHEDULING

Sensors are configured to take measurements at predetermined intervals. Vibration measurements can be overall values or spectra. In order to optimize battery life and reduce network traffic in both the Bluetooth array and host network, vibration measurements can be configured overall, and only if an alert or alarm level is exceeded will a full spectrum be taken. It is, however, possible to take spectra at any time for vibration baseline purposes. The sensor spends most of its time in an ultra-low power mode but can be instructed at any time to carry out a non-scheduled 'on-demand' measurement as it is always listening to the Bluetooth connection.

## BENEFITS

- Measures triaxial vibration, bearing condition, and temperature
- Ideal replacement for walk-around manual vibration data collection
- Monitors machinery every few hours rather than days, weeks, or months
- Low-cost online surveillance for plants not currently being monitored
- Provides overall vibration values and high-resolution spectra
- Straightforward installation with choice of mounting methods
- Sensor battery life up to 5 years

**Common machine issues can be tracked such as**

- Unbalance
- Misalignment
- Looseness
- Early bearing wear
- Electrical problems



## Route Management & Vibration Analysis Software

**FactoryManager™** is the latest state-of-art Vibration Route Management and Vibration Analysis Software. It is compatible with the current version of the application running on a 64-bit operating system. **FactoryManager™** has high versatility of features and carries several Unique Attributes.

### Unique Attributes

- Use forever without a time lock/upgrade compulsion
- Extremely User-Friendly Operation
- Run and is compatible with Databases
- Simple to learn and master with basic skill sets
- Exceeds Common Requirements of Analysis
- High-Resolution Display
- Cost Effective and Intuitive

### Standard Graphical Display

- Cursor –All common cursors available
- User requirement-based Zoom
- Trend of graph
- Waterfall
- Up to 99×RPM data displays

### The Underlying Strengths

- Compatibilities – Access data from wifi based sensors
- Multiple Options for every feature and function
- Emphasis on speed versus memory use
- Simple installation procedure
- Single or Networking Options
- Customization for OEMs
- Trending in multi-dimensions
- Graphical Views of Data
- Multi-user with access rights
- Delete Database

### Conveniences

- Copying Data and Graph to Document Formats
- Modifiable customized and Standard Report Settings
- Access Sensors/Gateway through the software
- Windows-like function on routes and nodes
- Prioritization of Graph and Data
- Flexibility of Database management
- User Define Labeling of Hierarchy
- Overdue Alert for Point
- Customizable display of Point Data
- Colored Status Flags for Alarm

### Data and Graph Management

- View basic data of a point on a single click
- Conversion of units
- Conversion from Time wave to FFT Spectrum
- Line and graph to FFT waterfall

### Alarm and Exceptions

- Variety of Band, Alarms
- Alarms on Fault Frequencies
- Hierarchy alarm presentation

For more details:

**Vyana Scientific Pvt. Ltd.**

D-998, First Floor, Palam Extension, Sector- 7, Ramphal Chowk, Dwarka,  
New Delhi-110075 India | Phone +91 11- 651 51 223 Fax: +91 11-45613132

Website: [www.vibanalyst.com](http://www.vibanalyst.com) | Email: [iiot@vyanascientific.in](mailto:iiot@vyanascientific.in)